

BRIEFLY SPEAKING

LOUISVILLE METRO HOUSING AUTHORITY EMPLOYEE NEWSLETTER



October/November/December 2010



NEWS OF NOTE

A WORLD OF THANKS A MESSAGE FROM TIM BARRY LMHA EXECUTIVE DIRECTOR

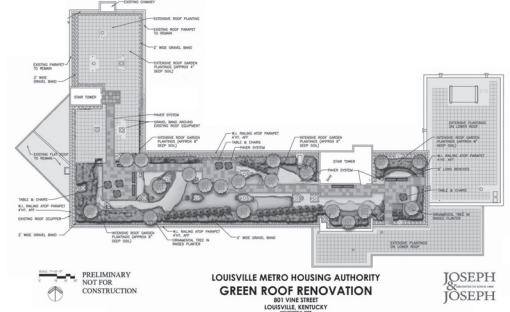
As we conclude our 2010 Metro United Way employee campaign, I would like to take this opportunity to thank you for choosing to support Metro United Way! Each year, we are asked to take part in the fund-raising effort, and each year you give generously.

I'm encouraged to see your support of our community, and applaud your willingness to join in our commitment to this most worthwhile organization. Now more than ever, the need is great in our community. The funds we raised will help support a variety of organizations that help children succeed, build strong families, promote health and independence, and strengthen neighborhoods. Your investment also ensures a safety net of services supporting optimal health and independence.

Thank you for your participation in this year's Metro United Way campaign. Your gift will help to make "a world of difference" for someone in need.

GREEN ROOF AT VINE STREET

LMHA is installing its first Green Roof at the Vine Street office. The roof will feature a variety of low-maintenance and drought-resistant native plants such as sedums, a cold-hard succulent with water storing leaves. Green roofs help reduce storm water run-off while mitigating urban heat island effects and improving air quality. The project completion date is Spring 2011.



"HEALTHY IN A HURRY" CORNER STORE

A "Healthy in a Hurry" Corner Store opened in November at the Parkway Food Mart (1201 W. Hill Street). The store, which will feature fresh produce, will serve Parkway Place residents as well as the neighboring community. This is the third corner store to open as part of a YMCA of Greater Louisville and Louisville Metro Public Health and Wellness department "Louisville Putting Prevention to Work" initiative.

LMHA DONATES 500 PAIRS OF NEW AND USED SHOES

LMHA employees put their best foot (and shoes) forward - thanks to the overwhelming response to the SHOE Drive, LMHA donated 500 pairs of new and used shoes to the EDGE Shoeman Water Project to support their efforts to provide clean, fresh drinking water to those in need. Way to go LMHA!!!

"THE EDGE" AT LIBERTY GREEN



Bill Weyland describes "The Edge" during the ground breaking ceremony.

RIBBON-CUTTING CEREMONY HELD FOR HOME RENOVATED BY YOUTHBUILD STUDENTS

YouthBuild, in collaboration with LMHA, held a ribbon-cutting ceremony for a LMHA-owned property located at 537 East Breckinridge. YouthBuild students converted the property from a duplex in to a single family home that will be occupied by a public housing resident. This historical property is one of a cluster of homes built in the 1800's by the Freedman's Bureau.



YouthBuild Executive Director Lynn Rippy presents a ceremonial key to the house to Manfred Reid, LMHA Board Chairman.



SALUTE TO SERVICE (OCTOBER - DECEMBER)

20 Years

(10/2010) Mike Barnett, Dosker Manor
(11/2010) Lee Harper, Construction Admin.
(12/2010) Jo Ann Smith, Vine Street

10 Years

(10/2010) Gina McClasky, Iroquois Homes
(10/2010) Lana Zusstone, Special Programs
(10/2010) Teri Carr, Vine Street
(11/2010) William Smith, Vine Street

5 Years

(10/2010) Stephanie Payne, Vine Street

Briefly Speaking is a bi-monthly employee newsletter published by the Public Information Office (PIO) for the LMHA. For more information contact Vikki Stone, PIO officer, (502) 569-3421 or vstone@lmha1.org.

Executive Director: Tim Barry
Deputy Executive Director - Operations: Will Seay
Deputy Executive Director - Finance: Wavid Wray
Website: www.LMHA1.org

Mayor Jerry Abramson, Congressman John Yarmuth (KY-3), Councilman David Tandy, Tim Barry, LMHA Executive Director, Manfred Reid, LMHA Board Chairman and Bill Weyland, CITY Properties Group, recently broke ground on "The Edge" at Liberty Green, the latest phase of the Liberty Green HOPE VI initiative. The master developers are Bill Weyland (CITY Properties Group) and Holly Weideman (AU Associates). The first phase will include three to four story "City Home" row houses with flexible floor plans. The homes will range from 600 sq. feet studios to 2,400 sq. feet three story units. Prices start at \$99,500 with the largest units selling for \$428,900.

BEECHER TERRACE ENRICHMENT CENTER CELEBRATES FIFTH ANNIVERSARY



LMHA Board Member Rose Livingston presents Tim Barry with a gift at the anniversary celebration held in September.

Congressman John Yarmuth (KY-3), Mayor Jerry Abramson, LMHA Board Chairman Manfred Reid, LMHA Executive Director Tim Barry and other local officials helped celebrate the fifth anniversary of the Beecher Terrace Enrichment Center. The center, nicknamed "The Beech", helps at-risk students acquire the necessary credits to graduate from Ballard High School and also exposes them to life skills and sustainability experiences. The brainchild of Ballard High School Assistant Principal and LMHA board member Rose Livingston, LMHA teamed up with Jefferson County Public Schools to create the learning center in the heart of Beecher Terrace. "Rose is to be commended for her efforts and on-going commitment to positively impacting the lives of young people," said Tim Barry. The Center helps students recover credits, provides practical living and character education, as well as connects parents and establishes a presence that instills hope, courage and confidence in the community. The Beecher Terrace Enrichment Center evolved through its collaboration with LMHA, JCPS, KY Dept. of Education, Spalding University, Brightside and other individuals in the community.



Congressman John Yarmuth takes time out for a photo with students following the event.

ARE YOU PUZZLED?

The winner of the July- September 2010 "Puzzler" is Chyna Eda, Occupancy. Congrats Chyna, please stop by Executive at your convenience to pick up your prize.

The answers to the puzzler are: 1) High School Musical; 2) School of Rock; 3) To Sir with Love; 4) FAME; 5) Carrie; 6) HOOP Dreams; 7) The Breakfast Club; 8) Ferris Bueller's Day Off; 9) Remember the Titans; 10) Dead Poet's Society; 11) Higher Learning; 12) Sixteen Candles; 13) Superstar; 14) Boys in the Hood; 15) American Pie or Graffiti



HAPPY BIRTHDAY TO:

October (belated)

Rochelle Burton, Dosker Manor
Bobby Campbell, HVAC
Eric Davis, Dosker Manor
Michael Ferriell, Vacancy Prep.
Curtis Foley, Bishop Lane Plaza
Lawrence Garnett, Parkway Plaza
Amber Goddard, Vine Street
Jonathan Guest, Extermination
Anthony Harvell Jr., Auto/Grounds
Dawn Haynes, Information Tech.
Tracy Holmes-Bell, Vine Street
Dale Hunter, LHS
Juan Hunter, Operations
Theiron Jackson, Beecher Terrace
Marquis Johnson, Auto/Grounds
Samuel Karnwie, Auto/Grounds
Judith King, Iroquois Homes
Delbert Lappin, Auto/Grounds
Robert Lee, Sheppard Square
Nicole Lyons, Special Programs
John McKissick, Parkway Place
Charles Mitchell, Parkway Place
Chester Murphy, Iroquois Homes
William Norris, Regional Maint.
Nate Northington, Operations
Ronald O'Bannon, Dosker Manor
Sharon Perkins, Bishop Lane Plaza
Jamesetta Phelps, Operations
Dana Porter, Vine Street
Marla Powell, Construction Admin.
Everett Stephenson, Lourdes Hall
Cal Swain, Construction Admin.
Bill Topping, Avenue Plaza
Denise Washington, Sheppard Square
George Wetherby, HVAC
Charlene Williams, Dosker Manor
Hollie Willingham, Liberty Green
Anna Zambrzycki, Occupancy

November (belated)

Teri Carr, Vine Street
Robert Barbour, Beecher Terrace
Dennis Basham, Finance
Rosemary Bissinger, Vine Street
Stephen Bland, Parkway Place
Chris Brown, Beecher Terrace
Mark Calloway, Iroquois Homes
Deborah Caston, Beecher Terrace
Sharon Coleman, Sheppard Square
Linda Dorsey, Operations
Sue Ann Drane, Vine Street
Vickie Fields, Operations
Carla Hardaway, Vine Street
JeRoy Hayden, Beecher Terrace

Mary Hundley, Vine Street
John Keen Jr., Parkway Place
Wayne Leeseberg, Bishop Lane
Diane Lindsey, Operations
Bridget Long, IPL
Carol Malone, Beecher Terrace
Victor Malone, Sheppard Square
Mika McClain, Parkway Place
Gina McClasky, Iroquois Homes
Juanita Mitchell, Avenue Plaza
Shantel Ndiaye, Liberty Green
Linda Nuss, Finance
Carl Paris, Beecher Terrace
Aldean Pleasant, Vine Street
Darlene Seabrooks Parkway Place
Deshawn Simpson, Liberty Green
Charles Smithson, Sheppard Square
Joseph Spencer, Auto/Grounds
Harold Swoope, Vacancy Prep.
Yasmin Thompson, Dosker Manor
John Victor, Family Investment Center
Michelle Yates, Vine Street

December

Valerie Al-Ethawi, Operations
Gary Bradley, Regional Maint.
Barry Bradshaw, Avenue Plaza
Debra Chittenden, Finance
Sharon Cofield, Dosker Manor
Gregory Crum, HVAC
Patrick Deadwyler, Dosker Manor
Willie Drain, Finance
Jernarick Ellington, Lourdes Hall
Michael Flora, Lourdes Hall
Norma Giles, Vine Street
Kimberly Goodin, Finance
James Grant, PG&E
Carlos Grigsby, Dosker Manor
Kevin Hughes, Bishop Lane Plaza
Mark Kirby, Beecher Terrace
Linda Little, Avenue Plaza
Robert Marshall, Regional Maint.
Cietay Mayfield, Beecher Terrace
Keith McCarthy, Iroquois Homes
Rodriquez Montgomery, Beecher Terrace
LaToya Morrison, Vine Street
Janie Orr, Sheppard Square
Gloria Phillips, Construction Admin.
Phil Reidinger, HVAC
Larry Rudolph, Lourdes Hall
Vanessa Ryland, Vine Street
Kathy Scott, Purchasing
Alyss Simpson, Vine Street
Jo Ann Smith, Vine Street
Robert Standifer, Auto/Grounds
Chiffon Taylor, Iroquois Homes
Kelly Thompson, Bishop Lane Plaza
John Vandevier, IPL
Anthony Williams, Special Programs
Lana Zusstone, Liberty Green

STAFF UPDATE

New Hires

Full-Time

Evelyn Coutee
Housing Clerk Typist - Vine Street

Kelly Davidson
Housing Clerk Typist - Vine Street

Oscar Scull-Martinez
Maintenance Worker II - Beecher Terrace

Andrea Stateman-Odom
Senior Social Worker - Special Programs

Natalie Thorpe
Senior Social Worker - Special Programs

John Victor
Senior Social Worker - Special Programs

Michele Yates
Housing Clerk Typist - Vine Street

Temporary to Full-Time

Walter Cosby
Maintenance Worker I - Sheppard Square

Eric Davis
Maintenance Worker I - Dosker Manor

Patrick Deadwyler
Maintenance Worker I - Dosker Manor

Darrence Hampton
Maintenance Worker I - Sheppard Square

Emmanuel Korgar
Maintenance Worker I - Avenue Plaza

Larry Rudolph
Maintenance Worker I - Lourdes Hall

Devin Thornton
Maintenance Worker I - Parkway Place

Temporary

Samuel Karnwie
Maintenance Worker I - Auto/Grounds

Robert Taylor
Maintenance Worker I - Auto/Grounds

Promotions

Rodriquez Montgomery
Maintenance Worker III - Beecher Terrace

Steven Webb
Purchasing Agent - Purchasing

Thomas White
Inventory Coordinator - Purchasing

Resignations

Anita Burrus
Key Control Monitor - Construction Admin.

Melvin Boyd
Temp. Maintenance Worker I - Auto/Grounds

Dynell Bush
Maintenance Worker III - Bishop Lane Plaza

Kimberlee Givens-Masters
Housing Specialist - Vine Street

Theresa Horsley
Hospitality Coordinator - Operations

Mary McDonald
Tutor - Special Programs

Carolyn Nichols
Administrative Aide - Parkway Place

Sheri Tyus
Housing Clerk Typist - Vine Street